

COUPLINGS HOW TO INSTALL

STANDARD IN-HOUSE CONNECTION

1)



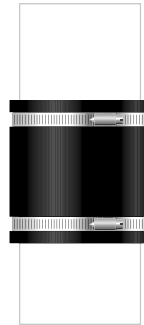
Loosen the stainless steel clamps, but **DO NOT REMOVE** the clamps from the coupling.

2)



Slide the PIPECONX Coupling over the ends of the two pipes to be joined.

3)



Tighten the stainless steel clamps to 60 inch-lbs. of torque.

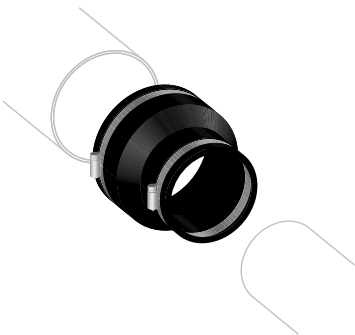
4)



Support the joint and pressure test for leaks before concealing.

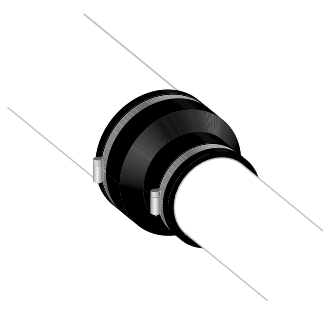
STANDARD IN-GROUND CONNECTION

1)



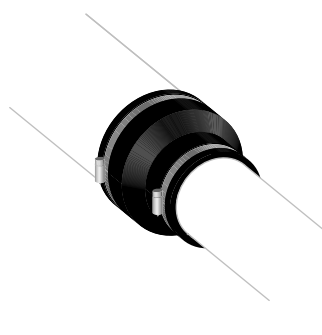
Loosen the stainless steel clamps, but **DO NOT REMOVE** the clamps from the coupling.

2)



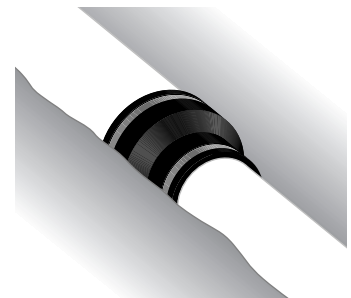
Slide the PIPECONX Coupling over the ends of the two pipes to be joined.

3)



Tighten the stainless steel clamps to 60 inch-lbs. of torque.

4)



Pressure test before covering joint. Be sure to bed and backfill properly.

NOTE: Maximum test pressure is 4.3 psi.